

SaaS

Software as a Service

Our software as a service (SaaS) offers direct solutions delivered straight to your business via a URL. With the added value of the simple login/logout aspect. Instead of installing and maintaining software, access it via the internet freeing yourself from complex software and hardware management. All businesses require the use of software to manage and monitor processes and procedures. Ideal for someone who doesn't want to spend money on having software on-premises but would rather have access to it over a cloud basis.

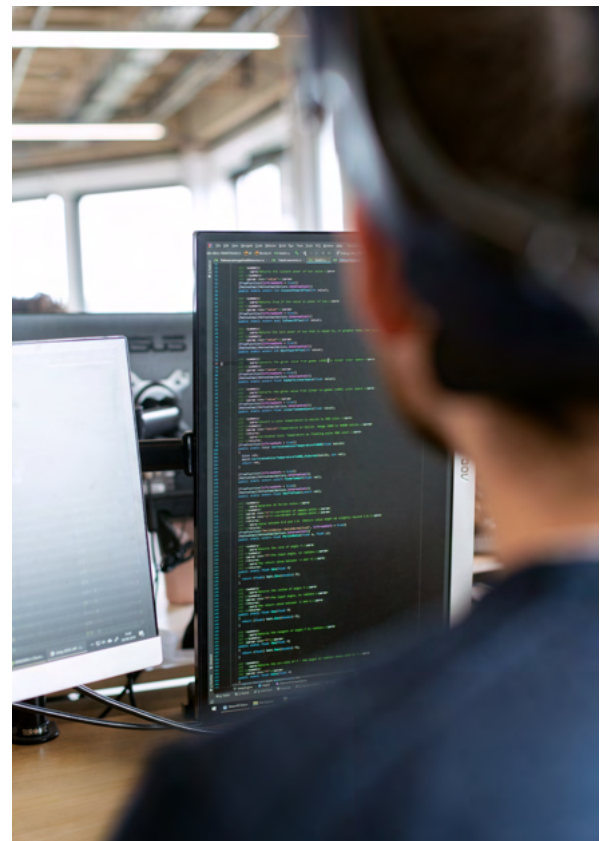
Software as a Service Explained

A distribution model, whereby a cloud provider hosts applications making business systems and solutions available to end-users over the internet. SaaS is a more affordable alternative solution to bespoke and custom-built solutions, alongside having more options available to help businesses productivity and efficiency.



How SaaS Differs from Custom-built Solutions?

- ✓ **Lower costs:** Provide beneficial cost savings as it resides in a shared/multi-tenant space. Bonus-hardware & software licenses are low compared to traditional models. With monthly subscription costs available.
- ✓ **Scalability & Integration:** As they reside in the cloud environment, they are more scalable and can be easily integrated into your business and other SaaS offerings.
- ✓ **Time:** Many people say 'time is money and thankfully with SaaS applications, installation is as simple as having an internet connection and acquiring a login.



SaaS

Software as a Service

Maintenance responsibilities are shifted from your IT department to the vendor itself. Eliminating extra work hours and downtime that might have been necessary to upgrade conventional software. SaaS apps and sites tend to have a smaller learning curve, which means quicker adoption across your workforce.

Our SaaS Products



Marketing Systems



Sales Systems



Fulfilment Systems



Time and Attendance
Systems



Contract Systems



Portal



Fleet Management
Systems

